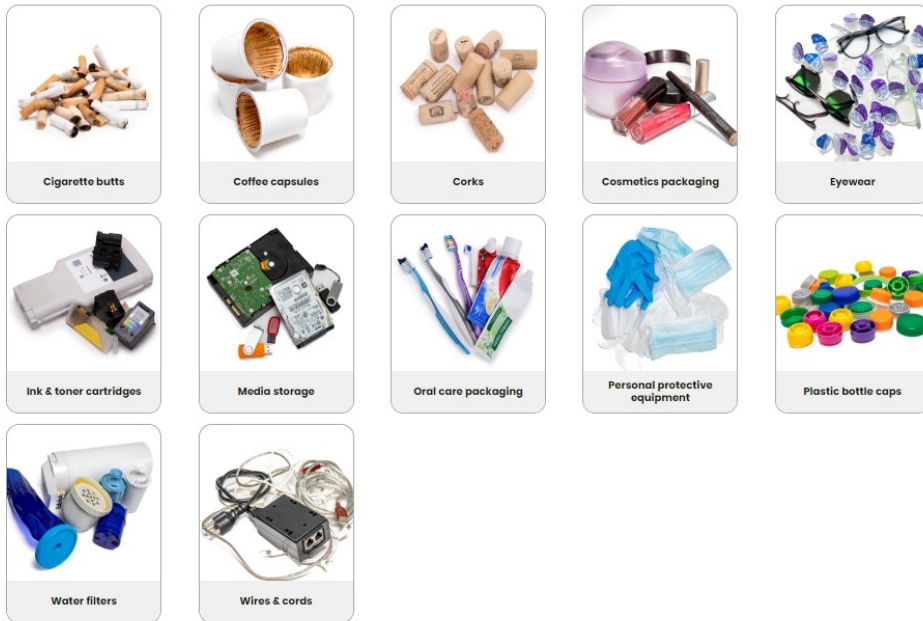


IMPORTANT: ONLY ONE ITEM TYPE PER BAG.

Recycle with Small Zero Waste Bags:

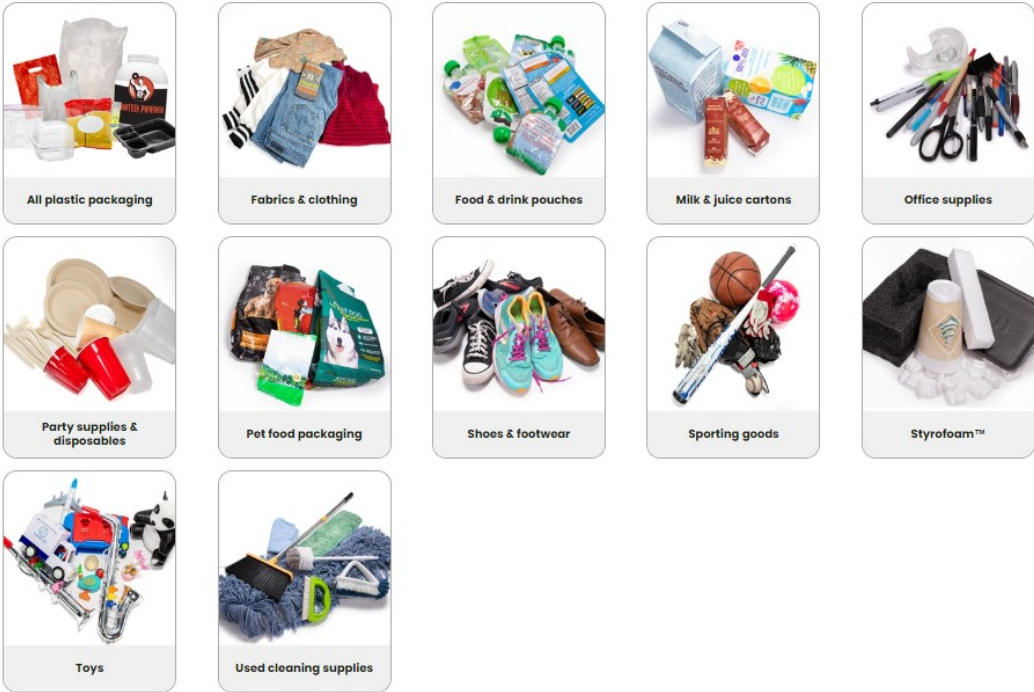


Small Zero Waste Bags	
cigarette-butts	<p>Accepted items: Rolling paper, ash, cigarette filters, all parts of extinguished cigarettes, cigar stubs, outer plastic packaging, inner foil packaging</p> <p>Not accepted: Cardboard packaging, cigarette boxes</p>
coffee-capsules	<p>Accepted items: Coffee capsules, pods, K-Cups, packs, or discs</p> <p>Not accepted: Electronics, loose coffee grounds, tea & coffee filters, coffee or tea accessories</p>

corks	<p>Accepted items: Natural beverage corks, synthetic beverage corks</p> <p>Not accepted: Bottle caps, screw tops, foil, aluminum champagne twists, bottles</p>
Cosmetics Packaging	<p>Accepted items: Any brand of empty cosmetic, haircare, or skincare packaging, beyond standard recyclable containers</p> <p>Not accepted: Wood & bamboo, wooden eyeliner pencils, cardboard, aerosol & pressurized cans, partially full and full packaging, perfume bottles, electronic items, nail polish bottles & removers</p>
eyewear	<p>Accepted items: Contact lenses, glasses, sunglasses, swim goggles, ski goggles, safety glasses, broken spectacles</p> <p>Not accepted: Wipes, eyewear cleaning products, cases, contact solution, eyeglass chains</p>
ink-toner-cartridges	<p>Accepted items: Ink cartridges, toner cartridges</p> <p>Not accepted: Printers, printer parts, printer accessories</p>
Media Storage	<p>Accepted items: 8-track tapes, CDs, DVDs, VHS tapes, Blu-ray discs, floppy disks, external hard drives, memory sticks, cassette tapes</p> <p>Not accepted: Computers, record players, 8-track players, cassette players, TVs, CD players, DVD players, VCRs</p>
Oral care packaging	<p>Accepted items: Toothpaste tubes, toothpaste caps, toothbrushes, toothbrush outer packaging, toothpaste tube outer packaging, floss containers</p> <p>Not accepted: Other oral care waste</p>
personal-protective-equipment-ppe	<p>Accepted items: Non-woven disposable plastic-based masks (including 3-ply, KN95, N95), latex gloves, nitrile gloves, vinyl gloves</p> <p>Not accepted: Medical waste, cloth masks, dipped synthetic gloves, coated synthetic gloves, biodegradable PLA gloves, leather gloves, fabric gloves, cloth gloves</p>
Plastic bottle caps	<p>Accepted items: Any plastic bottle cap</p> <p>Not accepted: Metal bottle caps, other beverage packaging, bottles, liquids</p>
Water filters	<p>Accepted items: Water filters</p> <p>Not accepted: Air filters, device using the filter</p>

Wires and cords	<p>Accepted items: TV cords, extension cords, cable wires, USB cables, computer cords, telephone cords, HDMI cables, ethernet cords</p> <p>Not accepted: Batteries</p>
-----------------	--

Recycle with Large Zero Waste Bags:



Large Zero Waste Bags	
All plastic packaging	<p>Accepted items: Air packaging, bubble wrap, padded envelopes or mailers, cereal bag liners, food storage & takeout containers, candy & snack wrappers, plastic shopping bags, Ziploc® bags, plastic wrap, shrink wrap</p> <p>Not accepted: Glass, wood, foamed plastics, biodegradable plastics, PLA</p>
Fabrics & Clothing	<p>Accepted items: Textiles, fabric, clothing</p> <p>Not accepted: Textiles with fill, liners, shoes, bags, hats, electronic heating blankets, purses</p>
Food and drink pouches	<p>Accepted items: Any size of flexible aluminum and plastic food and drink pouches</p>

	<p>Not accepted: Juice boxes, plastic containers, other beverage containers</p>
Milk and juice cartons	<p>Accepted items: Coated paper beverage cartons, including milk, juice, lemonade, iced tea, ice cream, and other freezer item cartons</p> <p>Not accepted: Paper contaminated with food, organics</p>
Office supplies	<p>Accepted items: Desk organizers, binder clips & fasteners, correction supplies, label backing, paper cutters, card filers, binders, staplers, tape dispensers</p> <p>Not accepted: Lithium-ion batteries, oil-based paint & pressurized canisters, expired medication, organics, broken glass, pesticides, biomedical waste & sharps, light bulbs of any kind</p>
Party supplies and disposables	<p>Accepted items: Tissue paper, straws, ribbons & bows, napkins, storage containers, party decorations, punch bowls, single-use cups & plates, utensils</p> <p>Not accepted: Electronic products, food & beverage containers, permanent glassware, permanent flatware</p>
Pet food packaging	<p>Accepted items: Flexible multi-layered pet food packaging</p> <p>Not accepted: Pet accessories, pet food</p>
Shoes and footwear	<p>Accepted items: Sandals, boots, shoes, heels</p> <p>Not accepted: Ski boots, inline skates, shoelaces, socks</p>
Sporting goods	<p>Accepted items: Training equipment, netting, sports clothing, sports safety equipment, cones, yoga mats, resistance accessories, whistles, bags</p> <p>Not accepted: Live bait, fish, large gym machines</p>
Styrofoam™	<p>Accepted items: Styrofoam™ shipping packaging, Styrofoam food packaging</p> <p>Not accepted: Containers contaminated with food, organics</p>
Toys	<p>Accepted items: Plastic building blocks, puzzle pieces, electronic handheld devices, electronic plush toys, flexible packaging, board games, playing cards, plastic & metal figures, remote-control vehicles</p> <p>Not accepted: Toys with batteries still inside</p>
Used Cleaning supplies	<p>Accepted items: Dustpans, empty spray bottles, empty detergent bottles & nozzles, empty</p>

	<p>cleaning product bottles, lid tops, dryer sheets, brooms, mops, buckets</p> <p>Not accepted: Solvents, drain cleaners, oven cleaners, disinfectant, toilet cleaners, detergents, fabric softeners, aerosol cans, bleach, all-purpose cleaners, degreasers</p>
--	---

Recycle with Extra Large Zero Waste Bags:



All plastic packaging



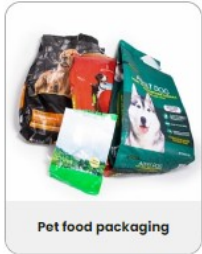
Food & drink pouches



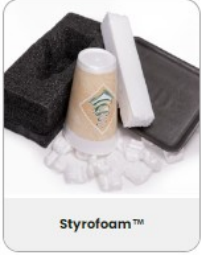
Milk & juice cartons



Party supplies & disposables



Pet food packaging



Styrofoam™



Used cleaning supplies

Extra Large Zero Waste Bags	
All plastic packaging	<p>Accepted items: Air packaging, bubble wrap, padded envelopes or mailers, cereal bag liners, food storage & takeout containers, candy & snack wrappers, plastic shopping bags, Ziploc® bags, plastic wrap, shrink wrap</p> <p>Not accepted: Glass, wood, foamed plastics, biodegradable plastics, PLA</p>
Food and drink pouches	<p>Accepted items: Any size of flexible aluminum and plastic food and drink pouches</p> <p>Not accepted: Juice boxes, plastic containers, other beverage containers</p>
Milk and juice cartons	<p>Accepted items: Coated paper beverage cartons, including milk, juice, lemonade, iced tea, ice cream, and other freezer item cartons</p> <p>Not accepted: Paper contaminated with food, organics</p>
Party supplies and disposables	<p>Accepted items: Tissue paper, straws, ribbons & bows, napkins, storage containers, party decorations, punch bowls, single-use cups &</p>

	<p>plates, utensils</p> <p>Not accepted: Electronic products, food & beverage containers, permanent glassware, permanent flatware</p>
Pet food packaging	<p>Accepted items: Flexible multi-layered pet food packaging</p> <p>Not accepted: Pet accessories, pet food</p>
Styrofoam™	<p>Accepted items: Styrofoam™ shipping packaging, Styrofoam food packaging</p> <p>Not accepted: Containers contaminated with food, organics</p>
Used Cleaning supplies	<p>Accepted items: Dustpans, empty spray bottles, empty detergent bottles & nozzles, empty cleaning product bottles, lid tops, dryer sheets, brooms, mops, buckets</p> <p>Not accepted: Solvents, drain cleaners, oven cleaners, disinfectant, toilet cleaners, detergents, fabric softeners, aerosol cans, bleach, all-purpose cleaners, degreasers</p>